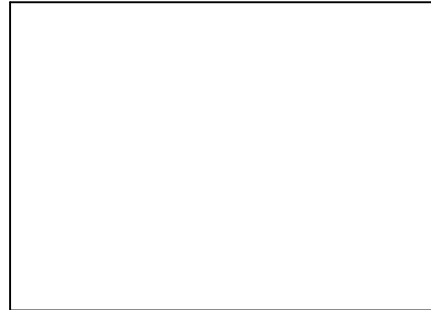


# 143PF, 144PF

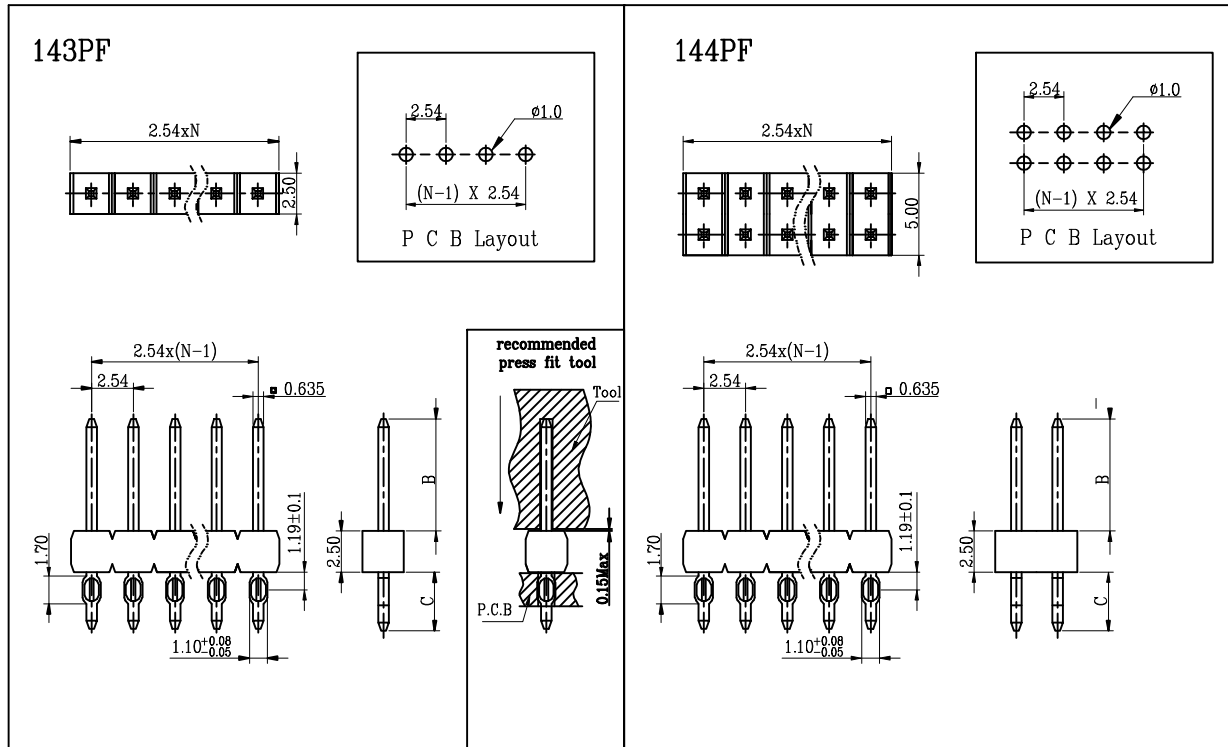
Pin-Header-Press-Fit-Single/Double row-2.54mm Pitch

## Technical Data :

**Insulator Material:** High Temperature Thermoplastic, UL 94V-0  
**Contact :** 0.635x0.635mm.  
**Contact Material:** copper alloy  
**Plating:** Au or Sn over Nickel  
**Current Rating :** 3 Amp  
**Insulator resistance :** 5000 Megohms min.  
**Dielectric withstanding :** AC 500V for 1 Minute  
**Operating Temperature:** -40°C to +105°C.  
**Max. processing Temp:** 230°C for 30-60 seconds.  
 260°C for 10 seconds.  
**Mates with :** 157,158,159,160,162,342,623,624,625  
**Push in PCB force:** 150N Max per pin  
**Push out PCB force:** 20N Min per pin



## RoHS Compliant



**How to order**  
 1 4 3 P F - [ ] [ ] [ ] - [ ] [ ] [ ] [ ]  
 1 4 4 P F - [ ] [ ] [ ] - [ ] [ ] [ ] [ ]  
 Serie-Nr. Terminal code Nr. of contact Plating option

Terminal code	Dimensions(mm)		Terminal code	Dimensions(mm)	
	B	C		B	C
10A	5.2	3.3	10B	5.2	6.5
13A	6.8	3.3	13B	6.8	6.5
14A	8.1	3.3	14B	8.1	6.5
15A	10.2	3.3	15B	10.2	6.5
16A	13.0	3.3	16B	13.0	6.5
XXX/XXX	as request B/C FOR Eg. B=7.0,C=6.5, CODE Nr.=7.0/6.5				

Number of contact	Code	Plating option	Code
143PF01~40pins	01~40	Selective gold flash plated	60
144PF02~80pins	02~80	10u*Selective gold plated	610
		15u*Selective gold plated	615
		20u*Selective gold plated	620
		30u*Selective gold plated	630

W.E.